

WE GIVE ENTREPRENEURS  
THE SPACE TO GROW  
THEIR BUSINESSES



1,000,000 ft<sup>2</sup> OF OPPORTUNITY



## ERIC BARTLETT

Property Manager

Eric has been involved in a wide range of technical applications over the past 35 years including 17 years of service at Siemens VDO. He is a highly-motivated individual with a solid mechanical engineering background including, technical specialist, supervision of technical staff, and program management.

For the past several years, Eric has provided business consulting for several small manufacturing firms designing new products. He is the inventor of nine US patents for innovative design solutions.

As the Property Manager of the Elgin Innovation Centre, Eric will arrange any lease hold upgrades and support the integration of your project into the facility.

Please call Eric for more information at (226)-448-9101

or email him at [EricB@AylmerBusiness.com](mailto:EricB@AylmerBusiness.com)



**ELGIN INNOVATION CENTRE - 516 John Street North, Aylmer, Ontario**  
**Area Summary - Exterior Wall Methodology**

Prepared By; Dimensions  
 Date Certified; December, 2007  
 Revision # 0  
 Revision Date

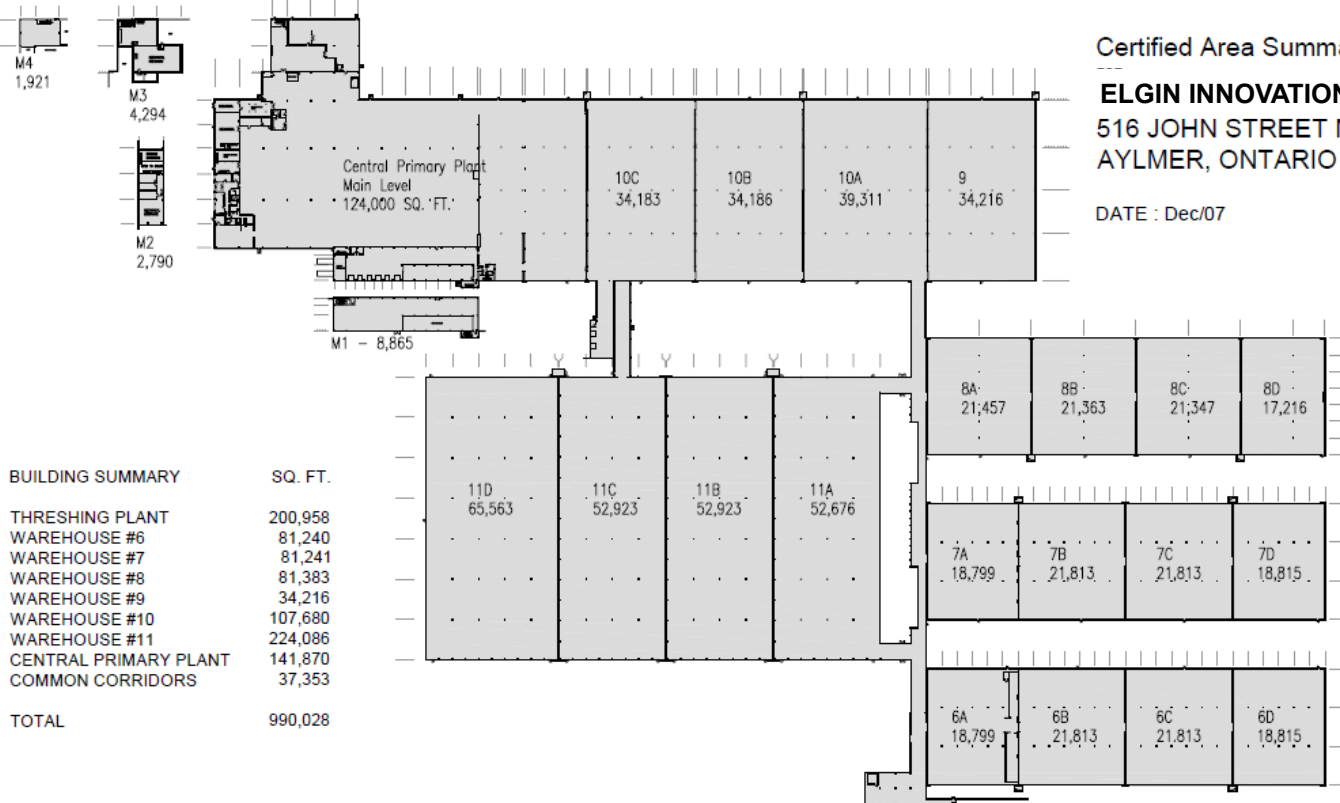
Building	Section	Typical Column Spacing*		Clearance Heights*		Area (Sq. Ft.)	Sub-Totals	Totals
		North/South	East/West	Center	Perimeter			
Threshing Plant	Main Floor Office					15,357.3		
	2nd Floor Office					11,938.9		
	Total Office					27,296.2	27,296.2	
	Main floor Warehouse	21.5' - 36.0'	21.5' - 43.0'	10.2' - 23.8'		102,803.4		
	Second Floor Warehouse	Varies	21'-6"	12.2' - 25.0'		66,150.4		
	Mezzanine					4,708.4		
	Total Warehouse					173,662.2	173,662.2	
Total Threshing Plant Area							200,958.4	200,958.4
Warehouse #6	6A	51.0'	20.0'	18.5'	18.5'	18,799.2		
	6B	51.0'	20.0'	18.5'	18.5'	21,813.1		
	6C	51.0'	20.0'	18.5'	18.5'	21,813.1		
	6D	51.0'	20.0'	18.5'	18.5'	18,814.6		
	Total Warehouse					81,240.1		81,240.1
Warehouse #7	7A	51.0'	20.0'	18.5'	18.5'	18,799.4		
	7B	51.0'	20.0'	18.5'	18.5'	21,813.4		
	7C	51.0'	20.0'	18.5'	18.5'	21,813.4		
	7D	51.0'	20.0'	18.5'	18.5'	18,814.9		
	Total Warehouse					81,241.0		81,241.0
Warehouse #8	8A	21.8'	69.0'	20.8'	20.8'	21,457.4		
	8B	21.8'	69.0'	20.8'	20.8'	21,362.8		
	8C	21.8'	69.0'	20.8'	20.8'	21,347.3		
	8D	21.8'	69.0'	20.8'	20.8'	17,216.0		
	Total Warehouse					81,383.4		81,383.4
Warehouse #9		57.0'	28.0'	24.8'	21.3'	34,216.0		
						34,216.0		34,216.0
Warehouse #10	10A	57.0'	28.0'	24.8'	21.3'	39,311.2		
	10B	57.0'	28.0'	24.8'	21.3'	34,185.9		
	10C	57.0'	28.0'	24.8'	21.3'	34,183.3		
	Total Warehouse					107,680.4		107,680.4
Warehouse #11	11A	53.3'	34.5'	32.3'	24.0'	52,676.4		
	11B	53.3'	34.5'	32.3'	24.0'	52,923.3		
	11C	53.3'	34.5'	32.3'	24.0'	52,923.3		
	11D	53.3'	34.5'	32.3'	24.0'	65,562.9		
	Total Warehouse					224,085.8		224,085.8
Central Primary Plant	Finished Office Area					3,470.1		
	Main Floor Warehouse	68.0'	31.3'	20'		120,530.1		
	Total Main Floor					124,000.2	124,000.2	
	M1 Mezzanine					8,864.6		
	M2 Mezzanine					2,789.9		
	M3 Mezzanine					4,293.5		
	M4 Mezzanine					1,921.3		
	Total Mezzanine					17,869.3	17,869.3	
Total Central Primary Plant							141,869.5	141,869.5
Total Common Corridor Area								37,353.2
<b>GRAND TOTAL AREA</b>								<b>990,027.8</b>

\* Column Spacing and Ceiling Heights vary and are shown for reference only. Confirm exact dimensions on site.

Certified Area Summary

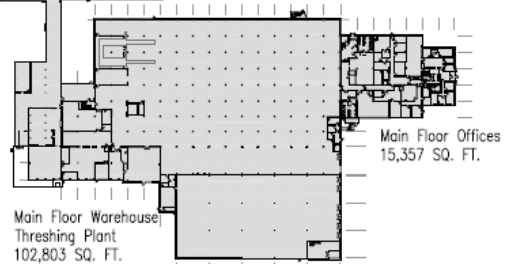
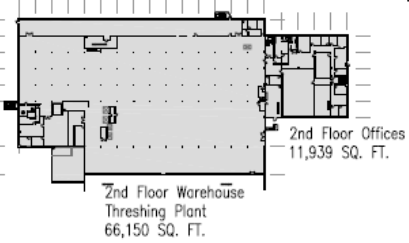
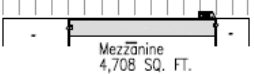
**ELGIN INNOVATION CENTRE**  
 516 JOHN STREET N.  
 AYLMER, ONTARIO

DATE : Dec/07



**BUILDING SUMMARY**

	SQ. FT.
THRESHING PLANT	200,958
WAREHOUSE #6	81,240
WAREHOUSE #7	81,241
WAREHOUSE #8	81,383
WAREHOUSE #9	34,216
WAREHOUSE #10	107,680
WAREHOUSE #11	224,086
CENTRAL PRIMARY PLANT	141,870
COMMON CORRIDORS	37,353
<b>TOTAL</b>	<b>990,028</b>



**Dimensions**

(Tel) 519-245-4147 (Fax) 519-245-4148  
 www.dimensions-ca.com



**ELGIN INNOVATION CENTRE - 516 John Street North, Aylmer, Ontario**  
**Area Summary - Exterior Wall Methodology**

Prepared By: Dimensions  
 Date Certified: December, 2007  
 Revision #: 0  
 Revision Date:

Building	Section	Typical Column Spacing		Clearance Heights*		Area (Sq. Ft.)	Sub-Totals	Totals
		North/South	East/West	Center	Perimeter			
Threshing Plant	Main Floor Office					15,357.3		
	2nd Floor Office					11,938.9		
	Total Office					<b>27,296.2</b>	<b>27,296.2</b>	
	Main floor Warehouse	21.5' - 36.0'	21.5' - 43.0'	10.2' - 23.8'		102,803.4		
	Second Floor Warehouse	Varies	21'-6"	12.2' - 25.0'		66,150.4		
	Mezzanine					4,708.4		
	Total Warehouse					<b>173,662.2</b>	<b>173,662.2</b>	
Total Threshing Plant Area							<b>200,958.4</b>	<b>200,958.4</b>
Warehouse #6	6A	51.0'	20.0'	18.5'	18.5'	18,799.2		
	6B	51.0'	20.0'	18.5'	18.5'	21,813.1		
	6C	51.0'	20.0'	18.5'	18.5'	21,813.1		
	6D	51.0'	20.0'	18.5'	18.5'	18,814.6		
	Total Warehouse					<b>81,240.1</b>		<b>81,240.1</b>
Warehouse #7	7A	51.0'	20.0'	18.5'	18.5'	18,799.4		
	7B	51.0'	20.0'	18.5'	18.5'	21,813.4		
	7C	51.0'	20.0'	18.5'	18.5'	21,813.4		
	7D	51.0'	20.0'	18.5'	18.5'	18,814.9		
	Total Warehouse					<b>81,241.0</b>		<b>81,241.0</b>
Warehouse #8	8A	21.8'	69.0'	20.8'	20.8'	21,457.4		
	8B	21.8'	69.0'	20.8'	20.8'	21,362.8		
	8C	21.8'	69.0'	20.8'	20.8'	21,347.3		
	8D	21.8'	69.0'	20.8'	20.8'	17,216.0		
	Total Warehouse					<b>81,383.4</b>		<b>81,383.4</b>
Warehouse #9		57.0'	28.0'	24.8'	21.3'	34,216.0		
							<b>34,216.0</b>	<b>34,216.0</b>
Warehouse #10	10A	57.0'	28.0'	24.8'	21.3'	39,311.2		
	10B	57.0'	28.0'	24.8'	21.3'	34,185.9		
	10C	57.0'	28.0'	24.8'	21.3'	34,183.3		
	Total Warehouse					<b>107,680.4</b>		<b>107,680.4</b>
Warehouse #11	11A	53.3'	34.5'	32.3'	24.0'	52,676.4		
	11B	53.3'	34.5'	32.3'	24.0'	52,923.3		
	11C	53.3'	34.5'	32.3'	24.0'	52,923.3		
	11D	53.3'	34.5'	32.3'	24.0'	65,562.9		
	Total Warehouse					<b>224,085.8</b>		<b>224,085.8</b>
Central Primary Plant	Finished Office Area					3,470.1		
	Main Floor Warehouse	68.0'	31.3'	20'		120,530.1		
	Total Main Floor					<b>124,000.2</b>	<b>124,000.2</b>	
	M1 Mezzanine					8,864.6		
	M2 Mezzanine					2,789.9		
	M3 Mezzanine					4,293.5		
	M4 Mezzanine					1,921.3		
	Total Mezzanine					<b>17,869.3</b>	<b>17,869.3</b>	
Total Central Primary Plant							<b>141,869.5</b>	<b>141,869.5</b>
Total Common Corridor Area								<b>37,353.2</b>
<b>GRAND TOTAL AREA</b>								<b>990,027.8</b>

\* Column Spacing and Ceiling Heights vary and are shown for reference only. Confirm exact dimensions on site.